

Making your repository more visible

Overview of DataCite / re3data work to improve search functionality to find suitable repositories

Sarala Wimalaratne / DataCite

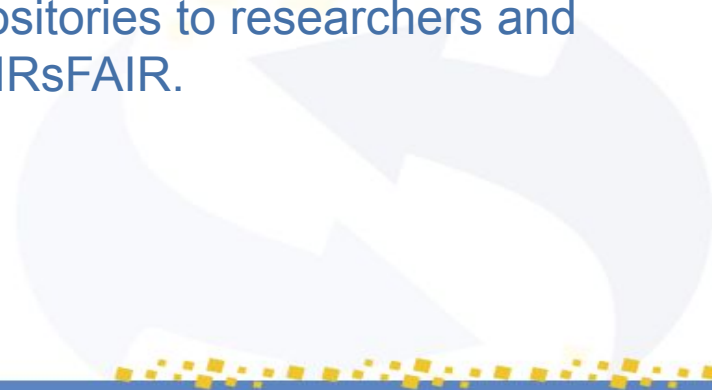
Robert Ulrich / Karlsruhe Institute of Technology (KIT)



FsF - Work Package 4

Fostering Fair Data Practices in Europe

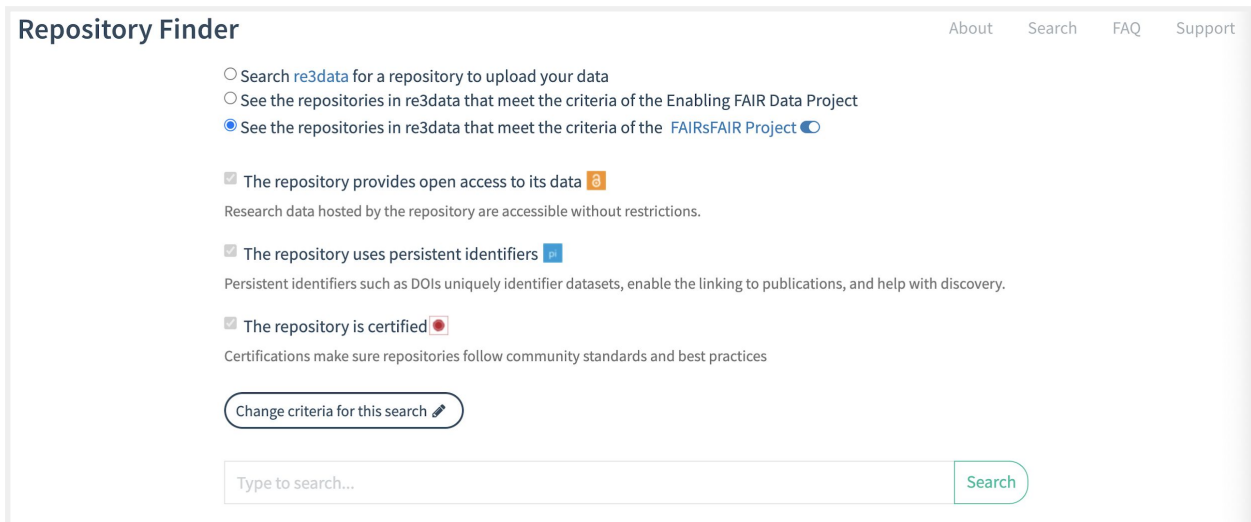
Together with DataCite, re3data is building services and going to provide tools for finding and selecting FAIR enabling repositories to researchers and other stakeholders based on the outcomes of FAIRsFAIR.



Status quo

For the first iteration of FAIRsFAIR work, DataCite extended the Repository Finder tool to enable users to search using 3 criteria (see Figure 1):

- The repository provides open access to its data
- The repository uses persistent identifiers
- The repository is certified



The screenshot shows the 'Repository Finder' interface. At the top right, there are navigation links: 'About', 'Search', 'FAQ', and 'Support'. The main content area contains three radio buttons for search criteria: 'Search re3data for a repository to upload your data', 'See the repositories in re3data that meet the criteria of the Enabling FAIR Data Project', and 'See the repositories in re3data that meet the criteria of the FAIRsFAIR Project' (which is selected). Below these are three checked checkboxes: 'The repository provides open access to its data' (with an 'a' icon), 'The repository uses persistent identifiers' (with a 'p' icon), and 'The repository is certified' (with a 'c' icon). Each checkbox has a descriptive sentence below it. At the bottom, there is a button labeled 'Change criteria for this search' with a pencil icon, a search input field with the placeholder text 'Type to search...', and a green 'Search' button.

Find and connect research

DataCite Commons

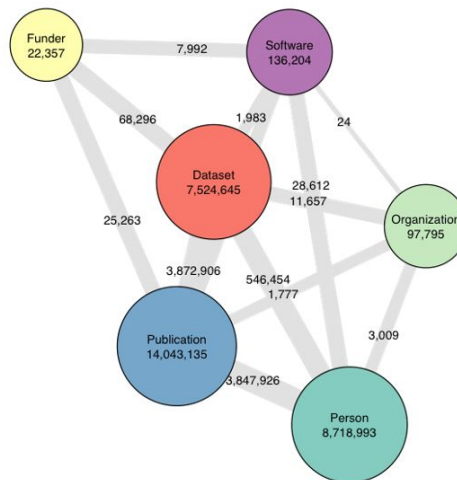
Front end interface for the PID Graph

Type to search...

Works People Organizations

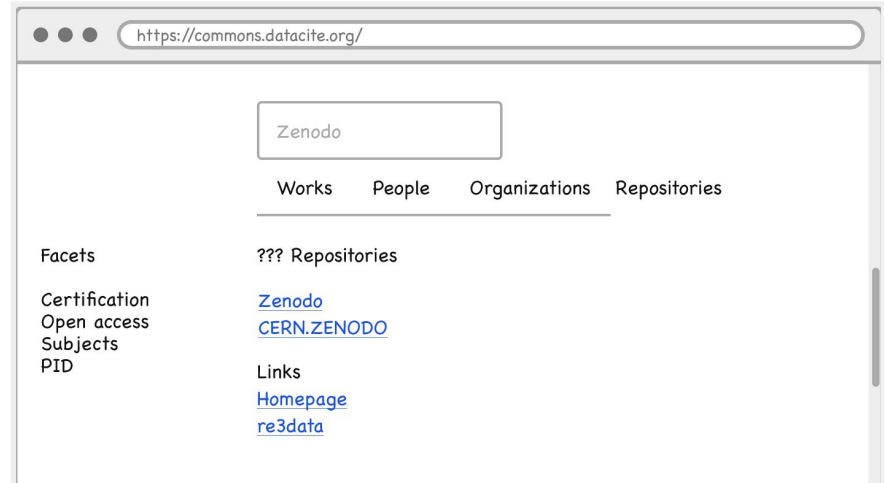
PID Graph

Nodes and connections (as of May 2020)



DataCite Commons Integration

For easy discovery of FAIR enabling repositories the Repository Finder is going to be transitioned into DataCite Commons. With this integration, research data repositories can be connected and explored within the PID Graph.



global registry of research data repositories (2,600+ repositories registered to date)

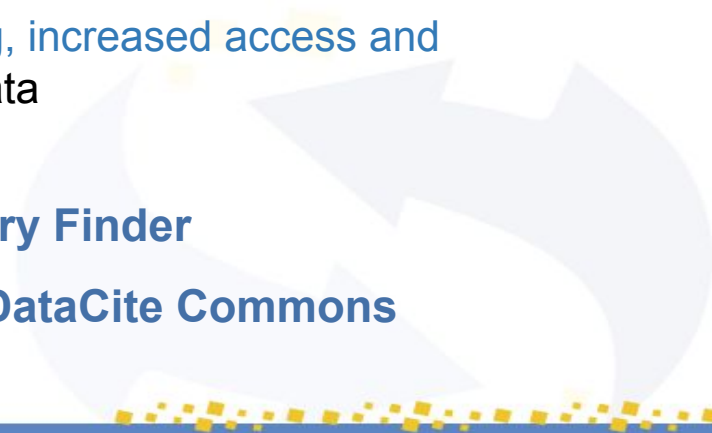
covers all academic disciplines

presents repositories and portals for the permanent storage and access of research data sets to researchers, funding bodies, publishers and scholarly institutions.

promotes a culture of sharing, increased access and better visibility of research data

data source for Repository Finder

& upcoming support for DataCite Commons



Certification

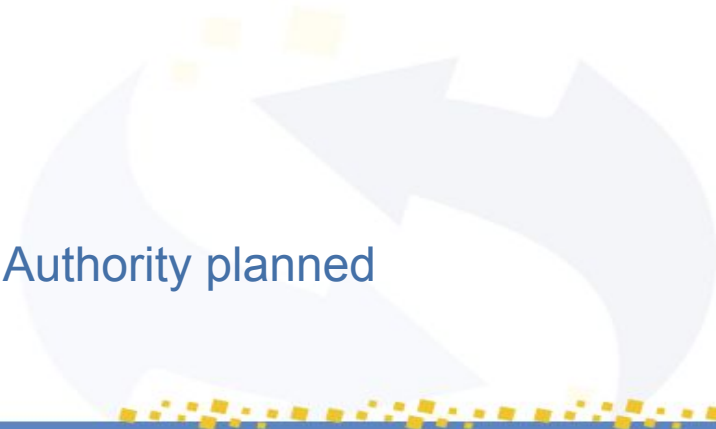


```
<repository>
...
<certificate>
  <certificateName>CoreTrustSeal+FAIR</certificateName>
  <certificateUrl>//cert.example/cert.pfd</certificateUrl>
  <certificateWidget>cert.example/badge.jpg</certificateWidget>
  <validUntil>2024-01-01</validUntil>
</certificate>
...
</repository>
```

Extending metadata schema

Implement proposed changes by CoreTrustSeal

API Integration of CoreTrustSeal as Certification Authority planned



API

Building up on Work Package 2 with initial support for



RDF/DCAT / Support in the repository metadata



FAIR Data Point / Make IRIs resolvable



Linking existing PIDs in Commons with Repositories

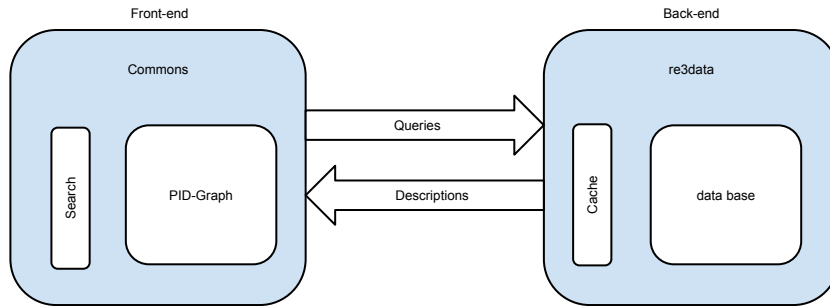


Profiles

Introducing a new property “profile”

Materialize current Repository Finder’s “FAIR enabling” into re3data repository metadata

Enable faceted search for “FAIR enabling” in DataCite Commons



Provide Feedback

Via 'Repository Search in DataCite Commons' card in our product board at:

<https://datacite.org/roadmap.html>

Contact us:



Web: www.datacite.org
Mail: support@datacite.org
Twitter: [@datacite](https://twitter.com/datacite)



Web: www.re3data.org
Mail: info@re3data.org
Twitter: [@re3data](https://twitter.com/re3data)